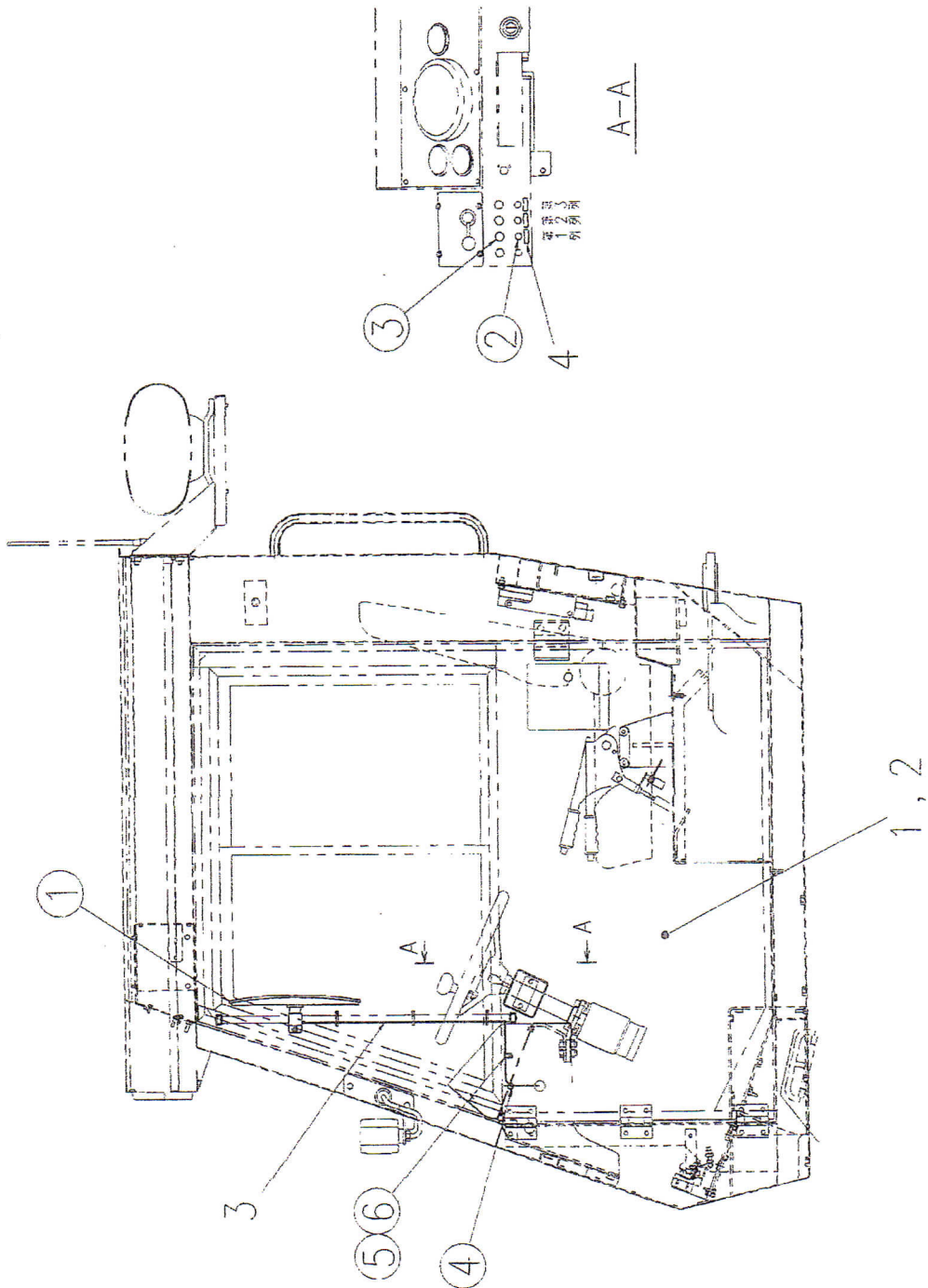


11-15 ELECTRICAL FITTINGS (HEAT WIRE MIRROR)



1

★ mark is non-sales parts. Please order by Assy of each.

**11-15 ELECTRICAL FITTINGS
(HEAT WIRE MIRROR)**

Serial No.

002~

Illust No.	Part No.	Part Name	QTY	CONV	Remarks
1~(6)	743-28970-000	Electrical fittings Assy	1		002~035
1~(6)	743-28970-100	Electrical fittings Assy	1	B	036~
1	713-17790-001	Door (left)	1		
2	713-17800-001	Door (right)	1		
3	743-28940-000	Harness,wire	1		002~065
3	743-28940-100	Harness,wire	1	B	066~
4	774-7380-101	Nameplate	1		
(1)	3B-DI-Z-12	Mirror	2		
(2)	4A-S301	Switch	1		
(3)	67-BG058-83600	Lamp,indicated	1		
(4)	73-C-30-SG-14A	Grommet	4		
(5)	79-NK-6N	Clip	2		
(6)	TPS1113510	Screw	2		

**11-16 ELECTRICAL FITTINGS
(MICROWAVE SAFE WORK ASSISTDEVIC**

Serial No.

036~065

Illust No.	Part No.	Part Name	QTY	CONV	Remarks
1~(11)	742-18760-000	Electrical fittings Assy	1		
1	713-17860-001	Cabin	1		
2	744-12660-000	Holder,fuse	1		
3	774-16100-001	Nameplate	1		
4	743-26120-000	Safety call	1		
(1)	TPS1115012	Screw	1		include #11
(2)	WP105	Washer,spring	1		
(3)	*	Light,flash	1		
(4)	3Z-4605	Fuse	1		
(5)	WS206	Washer,spring	1		
(6)	SNH140610	Nut	1		
(8)	TPS1114010	Screw	2		
(9)	WP104	Washer,plain	2		
(10)	89-S904	Hook,mike	1		
(11)	69-AKC-T021	Transmitter,safety call	1		

**11-16 ELECTRICAL FITTINGS
(MICROWAVE SAFE WORK ASSISTDEVIC**

Serial No.

066~

Illust No.	Part No.	Part Name	QTY	CONV	Remarks
1~(12)	742-18761-000	Electrical fittings Assy	1		
1	713-17861-001	Cabin	1		
2	743-46980-000	Harness,wire	1		
3	744-35460-000	Light,flash	1		
4	743-46680-000	Transmitter,safety call	1		
(1)	TPS1115012	Screw	2		
(2)	WP105	Washer,spring	2		
(5)	WS206	Washer,spring	1		
(6)	SNH140610	Nut	1		
(8)	TPS1114010	Screw	2		
(9)	WP104	Washer,plain	2		
(10)	89-S904	Hook,mike	1		
(11)	69-WT-01	Switch,telecon	1		
(12)	90-TAL-130(SMK)	Loop,safety	1		

**11-17 ELECTRICAL FITTINGS
(AM/FM, AM TUNER)**

Serial No.

002~065

Illust No.	Part No.	Part Name	QTY	CONV	Remarks
1~(9)	742-18880-000	Electrical fittings Assy	1		
1	713-18160-000	Cover (rear)	1		
2	712-09790-101	Cabin Assy	1		
3	748-4770-101	Bracket	1		
4	713-18150-000	Trimming (ceiling)	1		
5	719-7320-201	Seat	1		
6	744-21880-000	Wire,ground	1		
(1)	69-KRH-M69J	AM/FM tuner (AM/FM MODEL)	1		
(2)	69-SX-M1028S	Speaker	1		
(3)	69-RU-350	Antenna,rubber	1		
(4)	92-M4*25	Screw	4		
(5)	TPS1115012	Screw	8		
(6)	92-M5*10	Bolt	4		
(7)	TPS1115016	Screw	14		
(8)	73-C-29-M5	Washer	14		
(9)	69-KRH-M26J	AM tuner (AM MODEL)	1		

**11-17 ELECTRICAL FITTINGS
(AM/FM, AM TUNER)**

Serial No.

066~

Illust No.	Part No.	Part Name	QTY	CONV	Remarks
1~(11)	742-18880-200	Electrical fittings Assy	1		066~078
1~(11)	742-18880-400	Electrical fittings Assy	1	B	079~
1	713-18160-000	Cover	1		
2	712-09790-101	Cabin Assy	1		
3	748-4770-201	Bracket	1		
4	713-18150-000	Trimming (ceiling)	1		
5	719-7320-301	Seat	1		
6	744-21880-000	Wire,ground	1		
7	743-28900-200	Harness,wire	1		066~078
7	743-28900-400	Harness,wire	1	B	079~
8	748-9710-101	Bracket	1		
(1)	69-KRH-M69J	AM/FM tuner	1		
(2)	69-SX-M1028S	Speaker	1		
(3)	69-RU-350	Antenna,rubber	1		
(4)	92-M4*25	Screw	4		
(5)	TPS1115012	Screw	8		
(6)	92-M5*10	Bolt	4		
(7)	TPS1115016	Screw	14		
(8)	73-C-29-M5	Washer	14		
(9)	69-KRH-M26J	AM tuner	1		
(10)	SBH1S060401	Bolt	1		
(11)	CC0110	Clamp	3		

11-18 ELECTRICAL FITTINGS (STEP LAMP)				Serial No.	11-18-2 002~
Illust No.	Part No.	Part Name	QTY	CONV	Remarks
1~(9)	742-20310-000	Electrical fittings Assy	1		002~035
1~(9)	742-20310-100	Electrical fittings Assy	1	B	036~045
1~(9)	742-20310-200	Electrical fittings Assy	1	B	046~078
1~(9)	742-20310-300	Electrical fittings Assy	1	B	079~
1	743-5850-000	Bracket	2		002~045
1	748-5850-100	Bracket	2	B	046~
2	743-33111-000	Harness,wire	1		002~035
2	743-33112-000	Harness,wire	1	D	036~078
2	743-33112-200	Harness,wire	1	B	079~
3	743-17341-001	Bracket left	1		
4	743-17351-001	Bracket light	1		
5	712-7061-001	Cabin Assy	1		002~035
5	712-7061-101	Cabin Assy	1	B	036~045
5	712-7061-201	Cabin Assy	1	B	046~078
5	712-7061-301	Cabin Assy	1	B	079~
6	713-19730-101	Door left	1		
6	713-19730-201	Door left	1		
7	713-19850-001	Door light	1		
(1)	00-25365-00Z05	Switch,door	2		
(2)	00-26440-00Z01	Lamp,step	2		002~078
(2)	743-48100-000	Lamp,step	2	B	079~
(3)	79-NK-6N	Clip	13		
(4)	TPS1113510	Screw	9		
(5)	TPS1114010	Screw	2		
(6)	TPS1114510	Screw	16		
(7)	SBM8410	Screw	6		
(8)	WS204	Washer,spring	6		
(9)	SNH140410	Nut	6		

**11-19 ELECTRICAL FITTINGS
(REAR LABELING EQUIPMENT)**

Serial No.

036~065

Illust No.	Part No.	Part Name	QTY	CONV	Remarks
1~(7)	742-20851-000	Electrical fittings Assy	1		002~045
1~(7)	742-20851-100	Electrical fittings Assy	1	B	046~
1	743-35801-000	Harness,wire	1		036~045
1	743-40720-000	Harness,wire	1	D	046~
2	743-03921-001	Panel	1		
3	793-07990-000	Engine room	1		
4	773-09620-001	Spacer	2		
5	743-37840-000	Rear labeling equipment	1		
(2)	SBM8310	Screw	2		
(3)	SNH140310	Nut	2		
(4)	WS203	Washer,spring	2		
(5)	SBH14060201	Bolt	4		
(6)	SNH140610	Nut	4		
(7)	WS206	Washer,spring	4		

**11-19 ELECTRICAL FITTINGS
(REAR LABELING EQUIPMENT)**

Serial No.

066~

Illust No.	Part No.	Part Name	QTY	CONV	Remarks
1~(10)	742-20852-000	Electrical fittings Assy	1		066~078
1~(10)	742-20852-100	Electrical fittings Assy	1	B	079~
1	743-35801-000	Harness,wire	1		
2	734-03921-001	Panel	1		
3	793-07991-000	Engine room	1		
4	773-09620-001	Spacer	2		
5	743-37840-200	Rear labeling equipment	1		066~078
5	743-37840-300	Rear labeling equipment	1	B	079~
6	743-40720-000	Harness,wire (FLP55CYS,113CY MODEL)	1		
7	793-08990-000	Stay,rear under mirror	1		
(2)	SBM8310	Screw	2		
(3)	SNH140310	Nut	2		
(4)	WS203	Washer,spring	2		
(5)	SBH14060201	Bolt	4		
(6)	SNH140610	Nut	4		
(7)	WS206	Washer,spring	4		
(8)	WS208	Washer,spring	4		
(9)	WP108	Washer,plain	4		
(10)	SBH14080251	Bolt	4		

11-20 ELECTRICAL FITTINGS
 (DIFFUSED MARS LIGHT JPS55CY)

Serial No.

012~

Illust No.	Part No.	Part Name	QTY	CONV	Remarks
1~(6)	743-32840-000	Electrical fittings Assy	1		066~078
1~(6)	743-32840-100	Electrical fittings Assy	1	B	079~
1	748-3741-000	Harness,wire	1		
(1)	61-JPS55CYSS6VM	Diffused mars light	1		
(2)	61-33000-15230	Switch	1		012~065
(3)	SNH140810	Nut	4		
(4)	WS208	Washer,spring	4		
(5)	SBH14100251	Bolt	4		
(6)	WS210	Washer,spring	4		

**11-21 ELECTRICAL FITTINGS
(DIFFUSED MARS LIGHT FLP98CY)**

Serial No.

036~

Illust No.	Part No.	Part Name	QTY	CONV	Remarks
1~(6)	743-14750-000	Electrical fittings Assy	1		
1	743-14740-000	Bracket	1		
(1)	61-FLP-98CYS-F	Diffused mars light	1		
(2)	SBH14080251	Bolt	4		
(3)	SBH14100251	Bolt	4		
(4)	SNH140810	But	4		
(5)	WS208	Washer,spring	4		
(6)	WS210	Washer,spring	4		

**11-22 ELECTRICAL FITTINGS
(DIFFUSED MARS LIGHT FLP113CY)**

Serial No.

036~

Illust No.	Part No.	Part Name	QTY	CONV	Remarks
1~(6)	743-35010-000	Electrical fittings Assy	1		
1	742-16520-000	Bracket	1		
2	743-35000-000	Cabin Assy	1		
(1)	WS208	Washer,spring	4		
(2)	SNH140810	Nut	4		
(3)	WP108	Washer,plain	4		
(4)	SBH14100251	Bolt	8		
(5)	WS210	Washer,spring	4		
(6)	61-FLKP-113CY-S-F	Diffused mars light	1		

11-23 ELECTRICAL FITTINGS
(FRONT , REAR HEAT GLASS)

Serial No.

002~078

Illust No.	Part No.	Part Name	QTY	CONV	Remarks
1~(5)	743-28980-100	Electrical fittings Assy	1		002~045
1~(5)	743-28980-300	Electrical fittings Assy	1	B	046~
1	743-28550-100	Harness(1),wire (FRONT THERMOSTAT MODEL)	1		
2	743-28560-100	Harness(2),wire (FRONT THERMOSTAT MODEL)	1		
3	743-28570-100	Harness(1),wire (FRONT THERMOSTAT MODEL)	1		002~045
3	743-28570-200	Harness(1),wire (FRONT THERMOSTAT MODEL)	1	B	046~
4	779-0370-001	Nameplate (REAR HEAT GLASS)	1		
5	743-33930-000	Harness,wire (REAR HEAT GLASS)	1		002~045
5	743-33931-100	Harness,wire (REAR HEAT GLASS)	1	D	046~
5	743-36390-000	Harness,wire (REAR THERMOSTAT MODEL)	1		
(1)	79-KG-S18	Thermostat	1		
(2)	72-HW99042401A	Glass,rear heat	1		
(3)	69-J04-C1D1-24V	Relay	1		
(4)	79-NK-6N	Clip	3		
(5)	TPS1113510	Screw	3		

11-23 ELECTRICAL FITTINGS
(FRONT , REAR HEAT GLASS)

Serial No.

079~

Illust No.	Part No.	Part Name	QTY	CONV	Remarks
1~(5)	743-28980-400	Electrical fittings Assy	1		
1	743-28550-200	Harness(1),wire (FRONT THERMOSTAT MODEL)	1		
2	743-28560-200	Harness(2),wire (FRONT THERMOSTAT MODEL)	1		
3	743-28570-300	Harness(1),wire (FRONT THERMOSTAT MODEL)	1		
4	779-0370-001	Nameplate (REAR HEAT GLASS)	1		
5	743-33931-100	Harness,wire (REAR HEAT GLASS)	1		
6	743-36390-000	Harness,wire (REAR HEAT GLASS)	1		
(1)	79-KG-S18	Thermostat (THERMOSTAT MODEL)	2		
(2)	72-HW99042401A	Glass,rear heat (REAR HEAT GLASS)	1		
(3)	69-J04-C1D1-24V	Relay (REAR HEAT GLASS)	1		
(4)	79-NK-6N	Clip (REAR HEAT GLASS)	3		
(5)	TPS1113510	Screw (REAR HEAT GLASS)	3		

**11-24 ELECTRICAL FITTINGS
(LOUDSPEAKER SYSTEM)**

Serial No.

036~078

Illust No.	Part No.	Part Name	QTY	CONV	Remarks
1~(14)	742-20660-000	Electrical fittings Assy	1		036~065
1~(14)	742-20660-100	Electrical fittings Assy	1	B	066~
1	712-09790-101	Cabin Assy	1		
2	748-4770-101	Bracket	1		036~065
2	748-4770-201	Bracket	1	B	066~
3	743-34970-000	Harness,wire	1		036~065
3	743-34970-100	Harness,wire	1	B	066~
4	713-18150-000	Trimming (ceiling)	1		
5	719-7320-201	Seat (bracket,radio)	1		036~065
5	719-7320-301	Seat (bracket,radio)	1	B	066~
(1)	61-39900-11207	Unit,drive	1		
(2)	61-39900-11209	Speaker	1		
(3)	89-S904	Hook,microphone	1		
(4)	73-C-29-M5	Washer	10		
(5)	88-NDS-204A	Amplifier	1		
(6)	*	Microphone	4		
(7)	SBH14050201	Bolt	4		
(8)	TPS1114010	Screw	1		
(9)	TPS1113012	Screw	8		
(10)	TPS1113016	Screw	10		
(11)	WP104	Washer,plain	2		
(12)	WP105	Washer,plain	4		
(13)	WS205	Washer,spring	4		
(14)	69-AT810X	Microphone,head worn (HEAD WORN MICROPHONE MODEL)	1		

11-24 ELECTRICAL FITTINGS (LOUDSPEAKER SYSTEM)				Serial No.	079~	
Illust No.	Part No.	Part Name	QTY	CONV	Remarks	
1~(15)	742-20660-300	Electrical fittings Assy	1			
1	712-09790-301	Cabin Assy	1			
2	748-4770-201	Bracket	1			
3	743-34970-100	Harness,wire	1			
4	713-18150-000	Trimming (ceiling)	1			
5	719-7320-301	Seat (bracket,radio)	1			
8	743-48480-000	Harness,wire (EXTERNAL SPEAKER MODEL)	1			
(1)	61-39900-11207	Unit,drive	1			
(2)	61-39900-11209	Speaker	1			
(3)	*	Hook,microphone	1			
(4)	73-C-29-M5	Washer	10			
(5)	88-NDS-204A	Amplifier	1			
(6)	*	Microphone	1			
(7)	SBH14050101	Bolt	3			
(8)	SBH14050151	Bolt	1			
(9)	TPS1113012	Screw	8			
(10)	TPS1113016	Screw	10			
(11)	WP104	Washer,plain	1			
(12)	WP105	Washer,plain	4			
(13)	WS205	Washer,spring	4			
(14)	69-AT810X	Microphone,head worn (HEAD WORN MICROPHONE MODEL)	1			
(15)	88-CJ-14	Speaker (EXTERNAL SPEAKER MODEL)	1			

11-25 ELECTRICAL FITTINGS (AUGER REVERSE MODEL)

Serial No.

002~

Illust No.	Part No.	Part Name	QTY	CONV	Remarks
1~(1)	743-30230-000	Electrical fittings Assy	1		002~045
1~(1)	743-30230-100	Electrical fittings Assy	1	B	046~
1	743-30220-000	Harness,wire	1		002~045
1	743-30220-100	Harness,wire	1	B	046~
2	774-9720-01	Nameplate	1		
(1)	6K-HA2L-M1C54Y	Switch,illuminated	1		

**11-26 ELECTRICAL FITTINGS
(AM/FM CASSETTE WITH RADIO)**

Serial No.

036~065

Illust No.	Part No.	Part Name	QTY	CONV	Remarks
1~(7)	742-20670-000	Electrical fittings Assy	1		036~045
1~(7)	743-20670-100	Electrical fittings Assy	1	B	046~
1	713-20120-000	Cover,rear	1		
2	712-09790-101	Cabin Assy	1		
3	748-4770-101	Bracket	1		
4	713-18150-000	Trimming (ceiling)	1		
5	719-7320-201	Seat (bracket,radio)	1		
6	744-21880-000	Wire,ground	1		
7	748-9430-000	AM/FM cassette with radio	1		
8	748-9710-001	Bracket	1		
9	743-34950-000	Harness,wire	1		
(1)	69-SX-M1028S	Speaker	2		
(2)	69-RU-350	Antenna,rubber	1		
(3)	92-M4*25	Screw	8		
(4)	TPS1115012	Screw	8		
(5)	92-M5*10	Bolt	4		
(6)	TPS1115016	Screw	14		
(7)	73-C-29-M5	Washer	14		

11-26 ELECTRICAL FITTINGS (AM/FM CASSETTE WITH RADIO)				Serial No.	066~
Illust No.	Part No.	Part Name	QTY	CONV	Remarks
1~(9)	742-20670-200	Electrical fittings Assy	1		066~078
1~(9)	743-20670-400	Electrical fittings Assy	1	B	079~
1	713-20120-000	Cover,rear	1		
2	712-09790-101	Cabin Assy	1		
3	748-4770-201	Bracket	1		
4	713-18150-000	Trimming (ceiling)	1		
5	719-7320-301	Seat (bracket,radio)	1		
6	744-21880-000	Wire,ground	1		
7	748-9430-000	AM/FM cassette with radio	1		
8	748-9710-101	Bracket	1		
9	743-34950-100	Harness,wire	1		066~078
9	743-34950-300	Harness,wire	1	B	079~
(1)	69-SX-M1028S	Speaker	2		
(2)	69-RU-350	Antenna,rubber	1		
(3)	92-M4*25	Screw	8		
(4)	TPS1115012	Screw	8		
(5)	92-M5*10	Bolt	4		
(6)	TPS1115016	Screw	14		
(7)	73-C-29-M5	Washer	14		
(8)	SBH1S060401	Bolt	1		
(9)	CC0110	Clamp	3		

11-27 ELECTRICAL FITTINGS(1. 5m WIDTH
HYDRAULIC SHEAR-PIN-LESS DEVICE)

Serial No.

036~045

Illust No.	Part No.	Part Name	QTY	CONV	Remarks
1~(5)	742-21420-000	Electrical fittings Assy	1		
1	742-18440-000	Harness,wire	1		
2	744-27940-000	Bracket	1		
3	743-14000-000	Switch,pressure	1		
4	774-27770-000	Switch	1		
5	744-27780-000	Switch	1		
6	774-8780-001	Nameplate	1		
(1)	6K-HA2P-14G	Lamp,indicator	1		
(2)	WP318	Washer,plain	4		
(3)	SBH14060201	Bolt	5		
(4)	WP106	Washer,plain	2		
(5)	WS206	Washer,spring	7		

11-27 ELECTRICAL FITTINGS(1.5m WIDTH
HYDRAULIC SHEAR-PIN-LESS DEVICE)

Serial No.

046~

Illust No.	Part No.	Part Name	QTY	CONV	Remarks
1~(7)	742-21420-100	Electrical fittings Assy	1		046~078
1~(2)	742-21421-000	Electrical fittings Assy	1	D	079~
1	742-18440-000	Harness,wire	1		046~078
1	742-18441-000	Harness,wire	1	D	079~
2	744-27940-000	Bracket	1		046~078
3	743-14000-000	Switch,pressure	1		
4	744-27770-000	Switch	1		
5	744-27780-000	Switch	1		046~078
6	774-16320-101	Nameplate	1		
7	744-29160-001	Cover	1		046~078
(1)	41-M16-AG-24	Lamp,indicator	1		
(2)	WP318	Washer,plain	4		
(3)	SBH14060201	Bolt	2		046~078
(4)	WP106	Washer,plain	2		046~078
(5)	WS206	Washer,spring	2		046~078
(6)	SBH14080201	Bolt	2		046~078
(7)	WS208	Washer,spring	2		046~078

**11-28 ELECTRICAL FITTINGS
(THERMOSTAT WITH FRONT HEAT GLASS)**

Serial No.

002~

Illust No.	Part No.	Part Name	QTY	CONV	Remarks
1~(1)	743-28580-000	Electrical fittings Assy	1		002~011
1~(1)	743-28580-100	Electrical fittings Assy	1	D	012~045
1~(1)	743-28580-200	Electrical fittings Assy	1	B	046~065
1~(1)	743-28580-300	Electrical fittings Assy	1	B	066~
1	743-28550-100	Harness,wire	1		002~065
1	743-28550-200	Harness,wire	1	B	066~
2	743-28560-100	Harness,wire	1		002~065
2	743-28560-200	Harness,wire	1	B	066~
3	743-28570-100	Harness,wire	1		012~045
3	743-28570-200	Harness,wire	1	B	046~065
3	743-28570-300	Harness,wire	1	B	066~
(1)	79-KG-S18	Thermostat	1		

**11-29 ELECTRICAL FITTINGS
(INTERMITTENT WIPER)**

Serial No.

002~

Illust No.	Part No.	Part Name	QTY	CONV	Remarks
1~(1)	743-28690-100	Electrical fittings Assy	1		002~035
1~(1)	743-28690-200	Electrical fittings Assy	1	B	036~
1	733-06910-100	Panel Assy	1		002~035
2	743-28680-000	Harness,wire	1		
3	913-0481-001	Motor,wiper	1		
4	774-6340-001	Nameplate	1		
(1)	33-859790-0390	Switch,wiper	1		
(2)	33-866010-0201	Relay,intermittent	1		
(3)	87-OR-627-3.0A	Breaker,circuit	1		
(4)	SNH140610	Nut	2		
(5)	WS206	Washer,spring	2		
(6)	SBM8406	Screw	2		
(7)	WS204	Washer,spring	2		

11-30 ELECTRICAL FITTINGS (ONE-PASS MOWING EQUIPMENT)				Serial No.	046~
Illust No.	Part No.	Part Name	QTY	CONV	Remarks
1~(26)	742-22190-000	Electrical fittings Assy	1		046~065
1~(26)	742-22190-100	Electrical fittings Assy	1	B	066~
1	743-40310-000	Box Assy,control	1		
1	743-40310-100	Box Assy,control	1	B	066~
2	744-12420-000	Switch,foot	1		
3	742-22210-000	Harness(1),wire	1		046~065
3	742-22210-100	Harness(1),wire	1	B	066~
4	742-12490-100	Harness(2),wire	1		
5	744-12430-000	Harness(LAMP),wire	1		
6	774-12180-001	Nameplate	1		
8	732-04240-000	Box,control	1		
9	733-05250-001	Panel	1		
10	773-05720-101	Nameplate	1		046~065
10	773-05720-201	Nameplate	1	B	066~
(1)	68-ACA1223	Relay	1		
(2)	6K-AP9M222G	Lamp,indicator	1		046~065
(2)	6K-AP8M222G	Lamp,indicator	1		066~
(3)	80-6181-0077	Connector,water proof	1		
(4)	80-6918-0337	Retainer	1		
(5)	80-7161-9787	Plug,dummy	24		
(6)	92-D15	Ring	2		
(7)	CM0180200	Chain	2		
(8)	HH020NJ	Band,hose	2		
(9)	SBH14060151	Bolt	2		046~065
(9)	SBH14060151	Bolt	8		066~
(10)	WS206	Washer,spring	8		
(11)	SNH140610	Nut	6		
(12)	SBM8616	Screw	6		045~065
(13)	75-P Type	Ashtray	1		
(14)	TPS1114010	Screw	2		

**11-31 ELECTRICAL FITTINGS
(HYDRAULIC SNOW CUTTER)**

Serial No.

066~

Illust No.	Part No.	Part Name	QTY	CONV	Remarks
1~(5)	741-12840-000	Electrical fittings Assy	1		
1	743-37080-100	Switch Assy	1		
2	744-12660-000	Holder,fuse	1		
3	743-28700-000	Harness,wire	1		
4	773-07960-101	Nameplate	1		
5	774-24420-001	Nameplate	1		
6	743-26840-000	Cap	3		
7	553-03320-100	Bracket	1		
(1)	SBM8615	Screw	2		
(2)	WS206	Washer,spring	2		
(3)	SNH140610	Nut	2		
(4)	3Z-4605	Fuse	1		
(5)	32-7321-9332-60	Diode	3		

11-32 ELECTRICAL FITTINGS
(CIGARETTE LIGHTER SOCKET)

Serial No.

066~

Illust No.	Part No.	Part Name	QTY	CONV	Remarks
1~(4)	743-45010-000	Electrical fittings Assy	1		
1	734-04300-001	Panel	1		
2	743-44990-000	Harness,wire	1		
(1)	SNH140510	Nut	1		
(2)	WP105	Washer,plain	1		
(3)	WS205	Washer,spring	1		
(4)	39-SC-3012N125	Socket (cigarette lighter)	1		

**11-33 ELECTRICAL FITTINGS
(REAR OPERATING LAMP)**

Serial No.

066~

Illust No.	Part No.	Part Name	QTY	CONV	Remarks
1~(3)	743-43820-000	Electrical fittings Assy	1		
1	743-43830-000	Harness,wire	1		
2	743-33980-000	Lamp,operating	1		
3	793-08900-000	Engine room	1		
(1)	73-C-30-SG-16A	Grommet	1		
(2)	*	Bolt	1		
(3)	*	Nut	1		

**11-34 ELECTRICAL FITTINGS
(BATTERY SWITCH)**

Serial No.

066~

Illust No.	Part No.	Part Name	QTY	CONV	Remarks
1~(8)	742-23660-000	Electrical fittings Assy	1		
1	792-03870-000	Engine room	1		
2	744-33750-000	Cable,battery	1		
3	744-31220-000	Cable,battery	1		
4	744-13690-001	Bracket	1		
5	779-2101-001	Nameplate	1		
6	774-13160-001	Nameplate	1		
7	774-13170-001	Nameplate	1		
8	773-11000-001	Nameplate	1		
(1)	65-E-108MG	Switch,battery	1		
(2)	SBH14080201	Bolt	2		
(3)	WS208	Washer,spring	2		
(4)	07-MH-022185	Cap,terminal	2		
(5)	SBH14060151	Bolt	2		
(6)	WS206	Washer,spring	5		
(7)	SNH140610	Nut	5		
(8)	CC0115	Clmap	3		